



STRAND PALACE

LONDON HOTEL SINCE 1909

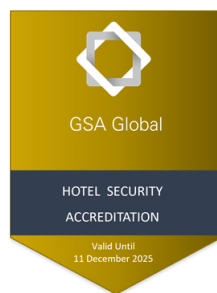
MEETINGS & EVENTS



INTRODUCTION

Launching November 2025, Strand Palace unveils its newly created Meetings & Events spaces. With **12 new meeting rooms bringing the total event spaces to 16**, these venues are flexible, modern, and set in the heart of Covent Garden, perfect for every occasion, from boardroom meetings to show-stopping gala dinners. Just moments from London's most iconic landmarks, theatres, and transport links, Strand Palace is where business meets heritage and modern design.

ACCREDITATIONS



FUTUREPLUS

KEY FEATURES

- ✓ Prime Covent Garden location
- ✓ 12 new versatile meeting & event spaces
- ✓ State-of-the-art AV & hybrid technology
- ✓ Bookable from 1 hour to a full day
- ✓ Dedicated on-site event support team
- ✓ Breakout & syndicate rooms
- ✓ Hosting up to 250 people
- ✓ Catering tailored to your event

NEAREST LANDMARKS

- London Eye**
15 mins walk, 1.0 km / 0.6 miles
- Buckingham Palace**
20 mins walk, 1.8 km / 1.1 miles
- Big Ben & Houses of Parliament**
15 mins walk, 1.4 km / 0.9 miles
- Trafalgar Square**
7 mins walk, 0.5 km / 0.3 miles
- British Museum**
15 mins walk, 1.1 km / 0.7 miles

AIRPORTS*

- Heathrow** 50-60 mins, 26 km / 16 miles
- Gatwick** 1 hr 15 mins, 45 km / 28 miles
- London City** 30-40 mins, 13 km / 8 miles
- Luton** 1 hr 10 mins, 55 km / 34 miles
- Stansted** 1 hr 15 mins, 63 km / 39 miles
- Southend** 1 hr 30 mins, 65 km / 40 miles

LOCATION

In the heart of London's West End, Strand Palace is a one-of-a-kind lifestyle destination for business and leisure. Surrounded by theatres, world-class dining and vibrant nightlife, the hotel enjoys unrivalled transport links from nearby tube and train stations.

Located at 372 Strand, just steps from Covent Garden, Strand Palace has welcomed guests since 1909, witnessing three monarchs and two world wars.

Following a multi-million-pound refurbishment of all 788 guestrooms and its historic façade, the hotel now enters a new era with its transformed Meetings & Events spaces.

NEAREST STATIONS

- ➡ **Charing Cross** 5 mins walk, 0.2 km / 0.1 miles
- 🚇 **Covent Garden** 6 mins walk, 0.4 km / 0.25 miles
- 🚇 **Embankment** 7 mins walk, 0.4 km / 0.25 miles
- 🚇 **Leicester Square** 9 mins walk, 0.6 km / 0.4 miles
- ➡ **Waterloo** 15 mins walk, 1.9 km / 1.2 miles

*traffic dependent



ROOMS AT STRAND PALACE

Strand Palace offers 788 modern guestrooms, from Classic Singles to Deluxe Studio Kings, all crafted for comfort and convenience. The rooms are Green Key Certified, with 24/7 security, complimentary high-speed Wi-Fi, and access to an on-site gym, restaurant and cocktail bar. Here are the nine room categories:

- Classic Single
- Superior Single
- Classic Double
- Superior Queen
- Superior King
- Superior King with View
- Superior Twin
- Deluxe Studio Queen
- Deluxe Studio King



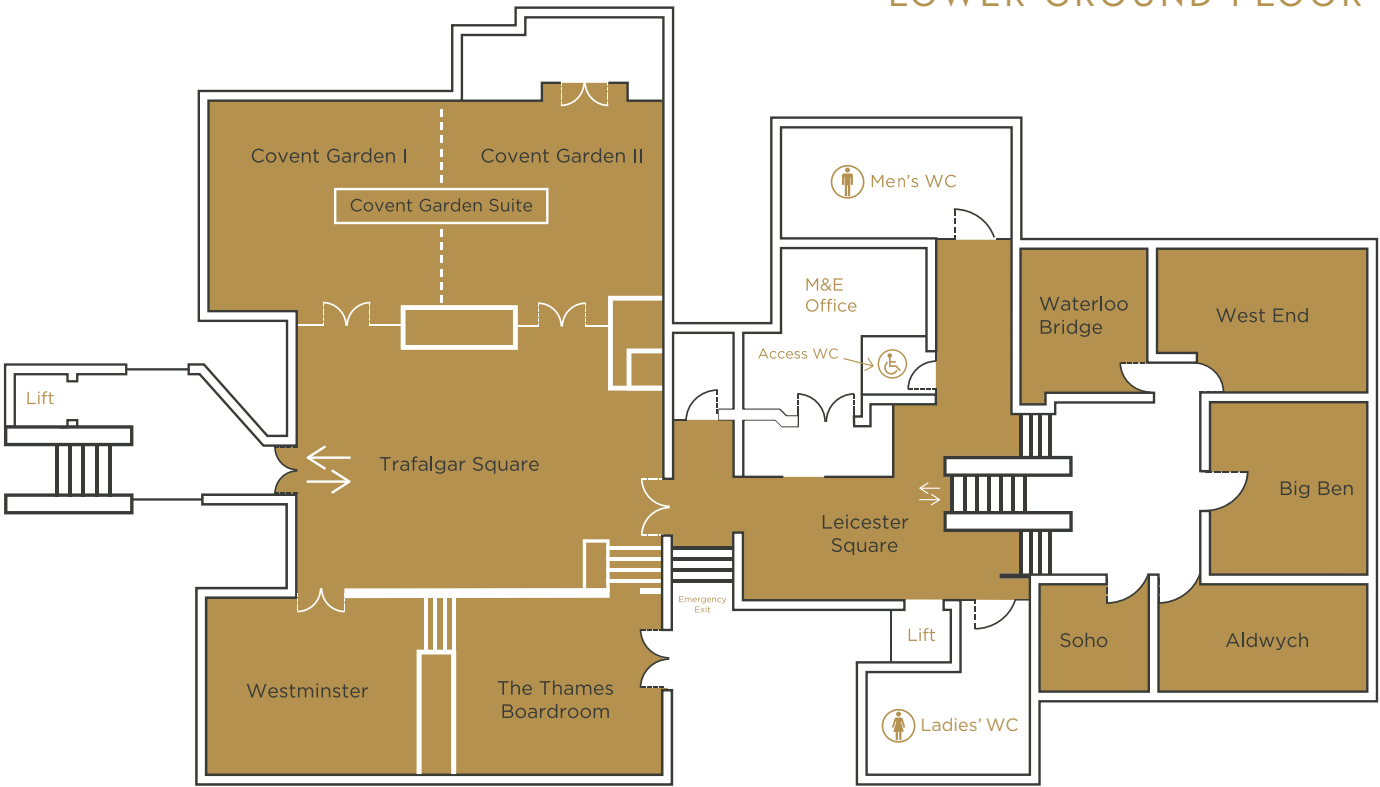
CAPACITY CHART

LAYOUT	THEATRE	CABARET 7 PER TABLE	CLASSROOM 3 PER TABLE	BOARDROOM	U-SHAPE	EXAM STYLE 2 PER TABLE	DRINKS RECEPTION	STANDING BUFFET	BANQUET 10 PER TABLE
Leicester Square							45		
Trafalgar Square							75		
Covent Garden Suite	250	84	116	60	72	60	200	200	140
Covent Garden I	120	48	54	38	40	36	100	100	80
Covent Garden II	80	35	27	22	25	18	70	60	50
Westminster	70	28	36	22	24	18	55	30	50
The Thames Boardroom				14					
West End	50	24	24	24		20	50	30	40
Big Ben	30	18	18	14		12	30	30	30
Aldwych	30	18	18	14		12	25	25	20
Waterloo Bridge				10					
Soho				6					
The Palace Tea Parlour				28	18			50	
1909 Private Dining Room				24	22			50	
The Gin Palace & Cocktail Bar								50	
Haxells Restaurant & Bar								250 on request	220 on request

Due to open 3rd November 2025 - capacity numbers subject to change. Please [contact us](#) for more information.

FLOOR PLAN

LOWER GROUND FLOOR



MEETINGS & EVENTS

At Strand Palace, flexibility meets heritage. Whether you're hosting a team away day, a workshop, or a large-scale celebration, our redesigned event spaces provide the perfect setting in the heart of Covent Garden.

- 12 new versatile event spaces with state-of-the-art technology, bringing the total to 16
- Capacity for up to 250 guests
- Ideal for board meetings, conferences, exhibitions, training, product launches, receptions and dinner
- Smaller spaces available for breakout sessions

THE DESIGN

Our Meetings & Events spaces have been transformed into a stylish hub, combining timeless Strand Palace heritage with contemporary elegance.

- Sophisticated yet functional design supporting productivity and comfort
- Art Deco-inspired details, light fittings and features
- Signature colour palette: deep blues and Strand Palace gold
- Seamless continuation of the hotel's multi-million-pound refurbishment
- Uplifting environment that balances classic character with modern workplace expectations



EVENT TYPES

- Gala dinners
- Boardroom meetings
- Filming & photoshoots
- Product launches
- Award celebrations
- Receptions & social events
- Training sessions
- Conferences

CHOOSE YOUR LAYOUT

THEATRE



Ideal for conferences or presentations to large groups

CLASSROOM



Makes note-taking easy during presentations

BOARDROOM



Classic seating style to facilitate open discussion

U-SHAPE



Perfect for presentations, video conferencing and training

CABARET



Seating with round tables, one side open towards the stage for clear viewing

BANQUETING



Perfect for formal dinners, celebrations, or networking over a meal



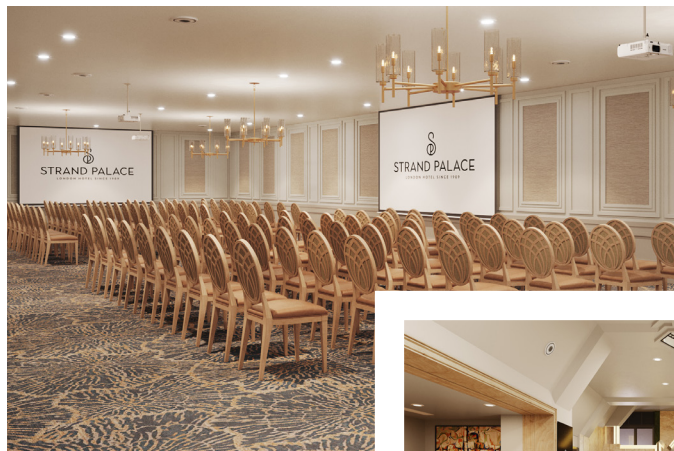
VENUE SPACES

At Strand Palace, everything you need for a seamless meeting or event is under one roof. From flexible spaces and modern facilities to thoughtful extras, we provide a setting that balances comfort, convenience and productivity.

- Private, soundproofed meeting rooms with breakout and syndicate options
- Central Covent Garden location near theatres, shops, and major transport links
- 788 guestrooms in a range of categories, perfect for large groups and congresses
- On-site dining including afternoon tea, a private dining room, café and catering services
- Complimentary refreshments, tea & coffee stations and snack station
- High-speed Wi-Fi, video/phone conferencing, AV support and office services (printing, scanning, photocopying)
- Flexible booking: from 1 hour to full-day hire
- Rooms with views, and fresh, modern décor
- Accessible rooms option, DDA compliant facilities
- 24-hour security

Strand Palace is fully equipped to support the needs of modern events:

- State-of-the-art AV for hybrid or live events
- On-site IT support dedicated to the hotel's AV equipment for seamless delivery
- Technology designed to inspire creativity and ensure flawless execution



DINING & CATERING

Our culinary team creates menus crafted with fresh, seasonal ingredients. From energising breakfasts and working lunches to elegant gala dinners, catering is tailored to every occasion.

THE STRAND MENU

For groups of 10+

£55PP

Available in 1909

The Palace Tea Parlour (From 6pm only)

Haxells Restaurant and Bar

Pre-order one option from each course per person

STARTERS

Smoked salmon with a fennel and apple salad, lime crème fraîche, caper berries and melba toast

Confit chicken and mushroom terrine, roasted tomato and onion purée, ciabatta crostini

Roasted and pickled heritage carrots, spiced crumb, mixed herbs, feta and beetroot reduction **VG**

MAINS

Twice-cooked pork belly with roasted Bramley apples, green beans, black pudding croquette and grain mustard-infused mashed potatoes

Seared seabass fillet on herbed crushed potatoes, petite ratatouille, red pepper coulis

Sweet potato, forest mushroom and asparagus risotto with truffle oil **VG**

DESSERT

Bitter chocolate and dulce de leche caramel tart with vanilla ice cream

Tiramisu with almond biscotti

Sago and pineapple with coconut mousse **VG**

THE COVENT GARDEN MENU

For groups of 10+

£65PP

Available in 1909

The Palace Tea Parlour (From 6pm only)

Haxells Restaurant and Bar

Pre-order one option from each course per person

STARTERS

Trio of duck (smoked duck, duck bonbon and duck liver pate), hoisin sauce, celeriac remoulade, beetroot purée

Vodka and lemon verbena-cured salmon, charred and pickled mixed veg ribbons, horseradish mousse & fish roe

Ricotta and spinach-stuffed zucchini, apple and parsley slaw, saffron aioli, chilli jam, garlic focaccia

MAINS

Smoked paprika chicken supreme, sauté cavolo nero, corn purée, fondant celeriac, mushroom demi-glacé

Roasted cod fillet, olive and sundried caponata, dauphinoise potato, heritage carrots, parsley and dill lemon butter sauce

Celeriac, portobello mushroom and truffle in a puff pastry envelope with chunky pont neuf potatoes and tomato relish **VG**

DESSERT

Rhubarb and apple crumble tart with sauce anglaise

Chocolate fondant with caramel popcorn and salted caramel ice cream

Green apple sorbet, apple crisps, toffee and chocolate crumbs **VG**

Please [contact us](#) with your group size and dietary requirements.




ROOM HIRE RATES


ROOM	TIMINGS	RATES FROM
Leicester Square	On Request	On Request
Trafalgar Square	On Request	On Request
Covent Garden Suite	Full Day Half Day Evening Event	£5,000 £3,000 Minimum catering spend £4,000
Covent Garden I	Full Day Half Day Evening Event	£2,500 £2,000 Minimum catering spend £2,000
Covent Garden II	Full Day Half Day Evening Event	£2,500 £2,000 Minimum catering spend £2,000
Westminster	Full Day Half Day	£1,000 £800
The Thames Boardroom	Full Day Half Day	£1,200 £1,000
West End	Full Day Half Day	£800 £600
Big Ben	Full Day Half Day	£600 £400
Aldwych	Full Day Half Day	£600 £400
Waterloo Bridge	Full Day	£500
Soho	Full Day	£500
The Palace Tea Parlour	Full Day Half Day	£800 £600
1909 Private Dining Room	Full Day Half Day	£800 £600
The Gin Palace & Cocktail Bar	Evening Event	Minimum catering spend £3,000
Haxells Restaurant & Bar	On Request	Minimum catering spend £5,000

1-hour room rentals available upon request. Please [contact us](#) for hire rates and more information.

KEY FEATURES AT A GLANCE



788 bedrooms




Central London location



Total of 16 modern meeting and events spaces



Events for 6 to 250 guests



Largest event space 172 sqm




Perfect for meetings, receptions and dining




High-speed WI-Fi



Dedicated on-site event support team




Flexible booking windows



Chef-curated menus with on-site catering



Room-only hire available



Syndicate & breakout rooms



DELEGATE PACKAGES

PACKAGES INCLUDE:

- Room hire
- State-of-the-art AV setup
- Unlimited tea, coffee, and pastries
- Seasonal buffet lunch
- Still and sparkling water
- Stationery and Wi-Fi
- Dedicated on-site support team

FROM
£70
PER
PERSON

BREAKS

SAMPLE MENU

Chia oat jar honey toasted hazelnut

Brioche breakfast buns egg, mushroom

Focaccia squares

Carrot halwa tartlets

Mini jam doughnuts

ALL DAY BREAK OUT

Whole fruit basket

Cookie jar

Sweets

WORKING LUNCH

SAMPLE MENU

Wiltshire ham and Cheddar baguette with English mustard mayonnaise

Open Danish smoked salmon, capers, onion rings on rye bread

Hummus, spinach, roasted courgette and tomato, pomegranate wrap **VG**

Potato crisps

Greek salad with feta **V**

Fruit salad **VG**

Salted caramel chocolate brownie **VG**

SIT DOWN BUFFET LUNCH AT HAXELLS

SAMPLE MENU

Soup of the Day with bread rolls

Caesar salad with shaved parmesan and croutons

Watermelon, feta, toasted mixed seeds with olive oil **V**

Coleslaw **V**

Roasted chicken supreme with forest mushroom jus

Vegetable korma curry with basmati rice, poppadoms and mango chutney **VG**

Steamed mixed vegetables **VG**

Roasted thyme and garlic new potatoes **VG**

Fruit salad **VG**

Belgian chocolate tart



ABOUT STRAND PALACE

Welcoming guests since 1909, Strand Palace is ideally located in the heart of London steps from Covent Garden and the River Thames. Following a multi-million-pound refurbishment in 2020 encompassing all of its 788 guestrooms, Strand Palace blends art deco style with contemporary design, offering modern comforts to both business and leisure travellers. Guests can enjoy British inspired cuisine and a pre-theatre menu at Haxells Restaurant & Bar, craft cocktails at The Gin Palace and afternoon tea held in The Palace Tea Parlour. Strand Palace was recognised as Best Accommodation Provider of the Year (2024) by the UKInbound Excellence Awards. A FuturePlus accredited hotel, Strand Palace's focus on sustainability and social responsibility is demonstrated by the property's Green Key and Great Place to Work accreditations. Strand Palace is part of the L+R Hotels property portfolio.

Matthew Beard, Managing Director of the Strand Palace shared his enthusiasm for the Meeting & Event Space renovation.

"Ever since we first opened our doors in 1909, the Strand Palace has put the guest experience at the forefront of all we do. The launch of our new Meeting & Event Space, in November this year, is set to offer our corporate and leisure guests the best possible experience for their events right here in the heart of London. Following on from the hotel's multi-million pound refurbishment of all 788 bedrooms, Haxells Restaurant & Bar, The Palace Tea Parlour and 1909 private dining room, we're excited to announce the launch of this new chapter of Strand Palace".



STRAND PALACE
372 STRAND, LONDON WC2R 0JJ
E : MEETINGS@STRANDPALACEHOTEL.CO.UK
T : +44 (0)20 7379 4737

WWW.STRANDPALACEHOTEL.CO.UK