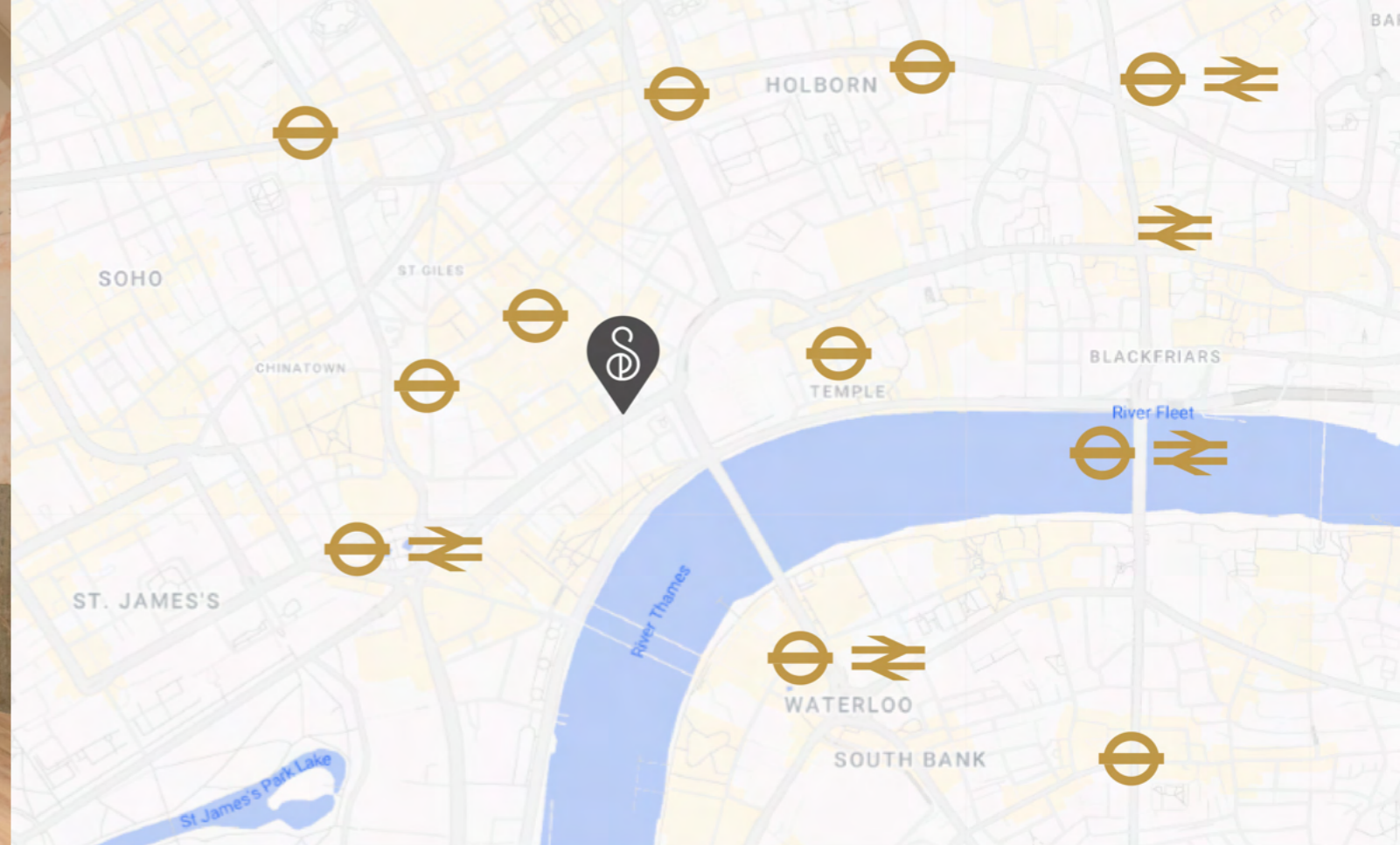




STRAND PALACE

LONDON HOTEL SINCE 1909

MEETINGS & EVENTS



INTRODUCTION

Welcome to The Gallery, the sophisticated new Meetings & Events spaces at the Strand Palace.

Unveiled in November 2025 following a multimillion-pound transformation, The Gallery represents a new chapter for this iconic 1909 Art Deco landmark. The launch introduces **12 state-of-the-art meeting rooms, elevating the total to 16 versatile event spaces** designed for high-impact corporate and social occasions on the Strand. Guests arrive via the hotel's Art Deco staircase, which marks the entrance to The Gallery. Additional heritage features, including the revolving door, were considered so exceptional in craftsmanship and historic significance that the Victoria and Albert Museum requested them for its collection, where they have been held since 1969.

Following a multi-million full refurbishment of all 788 guestrooms and the hotel's historic façade, Strand Palace enters a new era of elevated hospitality as an ideal destination for groups, conferences, and large-scale events **for up to 250 people**.

KEY FEATURES

- ✓ Prime Covent Garden location
- ✓ 12 new versatile meeting & event spaces
- ✓ State-of-the-art AV & hybrid technology
- ✓ Dedicated on-site event support team
- ✓ Breakout & syndicate rooms
- ✓ Hosting up to 250 people
- ✓ Catering tailored to your event

ACCREDITATIONS



HIGHLY COMMENDED Hotel of the Year

BUSINESS AWARDS 2025

FUTUREPLUS



LOCATION

NEAREST LANDMARKS

- London Eye**
15 mins walk, 1.0 km / 0.6 miles
- Buckingham Palace**
20 mins walk, 1.8 km / 1.1 miles
- Big Ben & Houses of Parliament**
15 mins walk, 1.4 km / 0.9 miles
- Trafalgar Square**
7 mins walk, 0.5 km / 0.3 miles
- British Museum**
15 mins walk, 1.1 km / 0.7 miles

AIRPORTS

- Heathrow** 50-60 mins, 26 km / 16 miles
- Gatwick** 1 hr 15 mins, 45 km / 28 miles
- London City** 30-40 mins, 13 km / 8 miles
- Luton** 1 hr 10 mins, 55 km / 34 miles
- Stansted** 1 hr 15 mins, 63 km / 39 miles
- Southend** 1 hr 30 mins, 65 km / 40 miles

In the heart of London's West End, Strand Palace is a one-of-a-kind lifestyle destination for business and leisure. Surrounded by theatres, world-class dining and vibrant nightlife, the hotel enjoys unrivalled transport links from nearby tube and train stations.

Located at 372 Strand, just steps from Covent Garden, Strand Palace has welcomed guests since 1909, witnessing three monarchs and two world wars.

NEAREST STATIONS

- ➡ **Charing Cross** 2-3 mins walk, 0.2 km / 0.1 miles
- 🚇 **Covent Garden** 4-5 mins walk, 0.4 km / 0.25 miles
- 🚇 **Embankment** 4-5 mins walk, 0.4 km / 0.25 miles
- 🚇 **Leicester Square** 6-7 mins walk, 0.6 km / 0.4 miles



ROOMS AT STRAND PALACE

Strand Palace offers 788 modern guestrooms, from Classic Singles to Deluxe Studio Kings, all crafted for comfort and convenience. The rooms are Green Key Certified, with 24/7 security, complimentary high-speed Wi-Fi, and access to an on-site gym, restaurant and cocktail bar. Here are the nine room categories:

- Classic Single
- Superior Single
- Classic Double
- Superior Queen
- Superior King
- Superior King with View
- Superior Twin
- Deluxe Studio Queen
- Deluxe Studio King



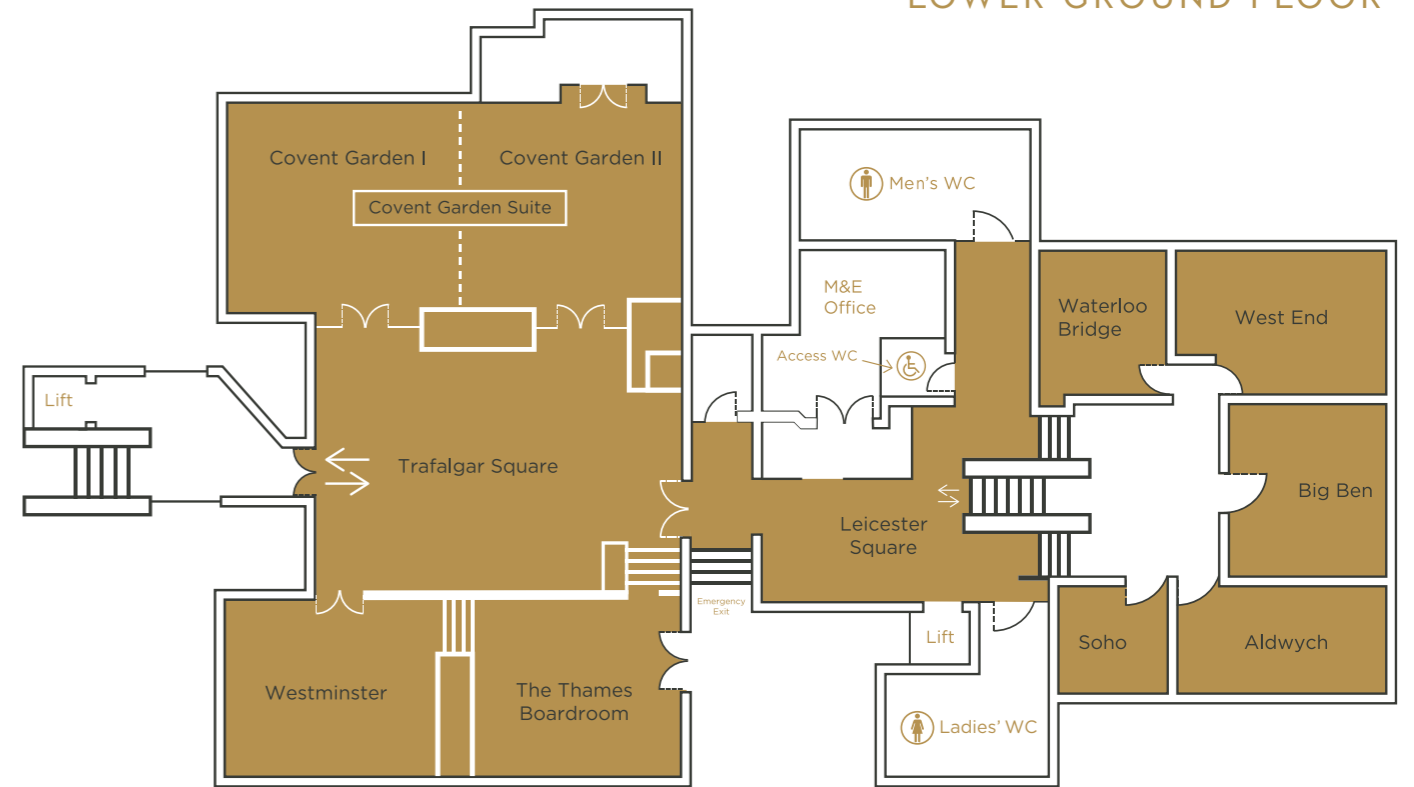
CAPACITY CHART

LAYOUT	THEATRE	CABARET 8 PER TABLE	CLASSROOM 2 PER TABLE	BOARDROOM	U-SHAPE	EXAM STYLE 2 PER TABLE	DRINKS RECEPTION	STANDING BUFFET	BANQUET 10 PER TABLE
Leicester Square							40		
Trafalgar Square							70		
Covent Garden Suite	250	96	108	60	72	80	200	200	130
Covent Garden I	120	56	56	40	40	36	100	100	70
Covent Garden II	80	40	30	24	25	18	70	60	50
Westminster	70	32	28	22	24	18	55	30	50
The Thames Boardroom				14					
West End	50	24	24	24		20	50	30	36
Big Ben	30	18	18	14		12	30	30	30
Aldwych	30	12	10	14		10	20	20	20
Waterloo Bridge				8					
Soho				8					
The Palace Tea Parlour				16	18			50	
1909 Private Dining Room				18	22			50	
The Gin Palace & Cocktail Bar								50	
Haxells Restaurant & Bar								250 on request	220 on request

Capacity numbers subject to change. Please [contact us](#) for more information.

FLOOR PLAN

LOWER GROUND FLOOR









KEY FEATURES

 788 bedrooms - ideal for groups & congresses	 Central London location - Covent Garden	 Total of 16 modern meeting and events spaces	 Events for 6 to 250 guests	 Largest event space 172 sqm
 High-speed WI-Fi	 Dedicated on-site event & IT support team	 Flexible booking windows	 Chef-curated menus with on-site catering	 Room-only hire available
 Perfect for meetings, receptions and dining	 Private, soundproofed syndicate & breakout rooms	 Accessible rooms and DDA compliant facilities	 State of the art AV for hybrid or live events	 Complimentary refreshments, coffee and snack stations

[ENQUIRE NOW](#)

CHOOSE YOUR LAYOUT

	<p>THEATRE</p> <p>Ideal for conferences or presentations to large groups</p>		<p>CLASSROOM</p> <p>Makes note-taking easy during presentations</p>
	<p>BOARDROOM</p> <p>Classic seating style to facilitate open discussion</p>		<p>U-SHAPE</p> <p>Perfect for presentations, video conferencing and training</p>
	<p>CABARET</p> <p>Seating with round tables, one side open towards the stage for clear viewing</p>		<p>BANQUETING</p> <p>Perfect for formal dinners, celebrations, or networking over a meal</p>



BOARDROOMS



CABARET & BANQUETING



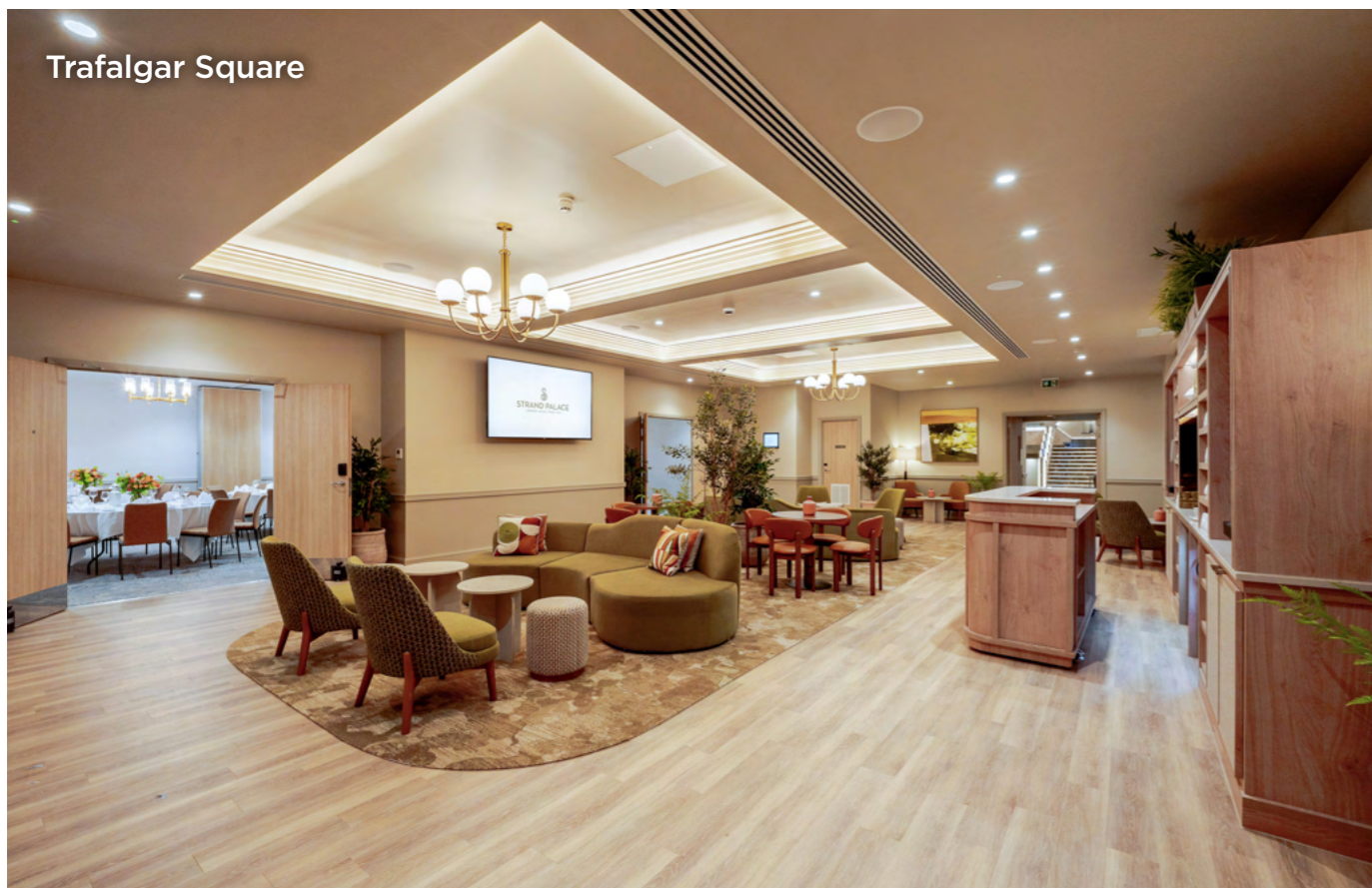
THEATRE



U-SHAPE



DRINKS & CANAPÉS RECEPTION



DINING & CATERING

Our culinary team creates menus crafted with fresh, seasonal ingredients. From energising breakfasts and working lunches to elegant gala dinners, catering is tailored to every occasion.

THE STRAND MENU

For groups of 10+

£55PP

Available in 1909
The Palace Tea Parlour (From 6pm only)
Haxells Restaurant and Bar
Pre-order one option from each course per person

STARTERS

- Smoked salmon with a fennel and apple salad, lime crème fraîche, caper berries and melba toast
- Confit chicken and mushroom terrine, roasted tomato and onion purée, ciabatta crostini
- Roasted and pickled heritage carrots, spiced crumb, mixed herbs, feta and beetroot reduction V

MAINS

- Twice-cooked pork belly with roasted bramley apples, green beans, black pudding croquette and grain mustard-infused mashed potatoes
- Seared seabass fillet on herbed crushed potatoes, petite ratatouille, red pepper coulis
- Sweet potato, forest mushroom and asparagus risotto with truffle oil V

DESSERT

- Bitter chocolate and dulce de leche caramel tart with vanilla ice cream V
- Tiramisu with almond biscotti V
- Sago and pineapple with coconut mousse VG

THE COVENT GARDEN MENU

For groups of 10+

£65PP

Available in 1909
the Palace Tea Parlour (From 6pm only)
Haxells Restaurant and Bar
Pre-order one option from each course per person

STARTERS

- Trio of duck (smoked duck, duck bonbon and duck liver pate), hoisin sauce, celeriac remoulade, beetroot purée
- Vodka and lemon verbena-cured salmon, charred and pickled mixed veg ribbons, horseradish mousse & fish roe
- Ricotta and spinach-stuffed zucchini, apple and parsley slaw, saffron aioli, chilli jam, garlic focaccia V

MAINS

- Smoked paprika chicken supreme, sauté cavolo nero, corn purée, fondant celeriac, mushroom demi-glacé
- Roasted cod fillet, olive and sundried caponata, dauphinoise potato, heritage carrots, parsley and dill lemon butter sauce
- Celeriac, portobello mushroom and truffle in a puff pastry envelope with chunky pont neuf potatoes and tomato relish VG

DESSERT

- Rhubarb and apple crumble tart with sauce anglaise V
- Chocolate fondant with caramel popcorn and salted caramel ice cream V
- Green apple sorbet, apple crisps, toffee and chocolate crumbs VG

Please [contact us](#) with your group size and dietary requirements.



PACKAGES INCLUDE:

- Room hire
- State-of-the-art AV setup
- Unlimited tea, coffee, and pastries
- Seasonal buffet lunch
- Still & sparkling water
- Stationery and Wi-Fi
- Dedicated on-site support team

FROM
£70
PER
PERSON

BREAKS

SAMPLE MENU

- Greek yoghurt pots with berry compote
- Cheddar and chive scones
- Spiced chickpea fritters
- Lychee fruit tartlet
- Vegetable gyoza with soy-ginger dip

ALL DAY BREAK OUT

- Whole Fruit Basket
- Cookie Jar
- Sweets
- Nibbles

WORKING LUNCH

SAMPLE MENU

- Ham, mustard mayo & watercress on malted bloomer
- Smoked salmon, cream cheese & dill on a rustic baguette
- Cheddar, tomato chutney & spinach in a flour tortilla wrap **V**
- Roast chicken, new potato, pea & mint salad
- Roasted root vegetable & lentil salad **VG**
- Braised chicken & mushroom pie
- Cauliflower & leek gratin **VG**
- Carrot cake **V**
- Tropical fruit platter **VG**

SIT DOWN BUFFET LUNCH AT HAXELLS

SAMPLE MENU

- Chicken pesto pasta salad
- Roast peppers and roasted courgette with balsamic glaze **V**
- Quinoa & Mediterranean roast vegetable salad **VG**
- Coleslaw **V**
- Beef lasagne
- Herb crusted baked cod
- Mediterranean vegetable lasagne **V**
- Savoy cabbage **VG**
- Garlic & herb roast potatoes **VG**
- Tiramisu cups **V**
- Tropical fruit platter **VG**

Please [contact us](#) with your group size and dietary requirements.



The site of today's Strand Palace has a long history as a place of spectacle and gathering. In 1676 the Exeter Exchange rose here, later becoming famous for the extraordinary menagerie installed on its upper floors in 1773. Run by Edward Cross, it housed lions, tigers, monkeys and even hippopotami. When the Exchange was demolished in 1829, the animals moved to the Surrey Zoological Gardens. The site was transformed into Exeter Hall in 1831 answering London's pressing need of the biggest city in the World for a grand indoor meeting space and soon became the centre of major public life, hosting anti-slavery gatherings and the Anti-Corn Law League. When Exeter Hall was demolished in 1907, the Strand Palace rose in its place.

Today Strand Palace continues the site's legacy as a place where significant meetings and ideas once again find a home.

Welcoming guests since 1909, Strand Palace is ideally located in the heart of London, between Covent Garden and the River Thames. Guests can enjoy British inspired cuisine and a pre-theatre menu at Haxells Restaurant & Bar, craft cocktails at The Gin Palace and afternoon tea held in The Palace Tea Parlour. Strand Palace was recognised as Best Accommodation Provider of the Year (2024) by the UKInbound Excellence Awards. A FuturePlus accredited hotel, Strand Palace's focus on sustainability and social responsibility is demonstrated by the property's Green Key and Great Place to Work accreditations.



Jill Van Rest, General Manager of Strand Palace shared her enthusiasm for the Meeting & Event Space renovation.

"At Strand Palace, creating memorable guest experiences has always been at the heart of everything we do. Following the transformation of our guestrooms and public spaces, alongside the launch of our expanded Meetings & Events offering, we are excited to strengthen the hotel's position as one of London's leading destinations for corporate gatherings, conferences and social events. I'm incredibly proud to lead this next phase alongside our talented team."

ENQUIRE NOW



STRAND PALACE
372 STRAND, LONDON WC2R 0JJ
E : MEETINGS@STRANDPALACEHOTEL.CO.UK
T : +44 (0)20 7379 4737

WWW.STRANDPALACEHOTEL.CO.UK